

## Powerblanket® Pipe Wrap Heater



## Powerblanket® Pipe Wrap Heater Instructions

Powerblanket®

3130 South 1030 West

Salt Lake City, UT 84119



## Powerblanket® Pipe Wrap Heater Installation Instructions

The design is such that two people can easily install most of the Powerblanket® Pipe Wrap Heaters.

Photo of PH040603 installed on a 6-3/4" OD (blue) cylinder.



Note the external 1" wide webbing straps with integral metal buckles are used to secure the Pipe Wrap heater to the pipe. Note also that the electrical cord comes out of the **left end** of the Pipe Wrap heater. As shown below, the cord end of the blanket is completely overlapped and covered by the buckle end of the blanket. This is **very important** for the functionality of your Pipe Wrap heater.

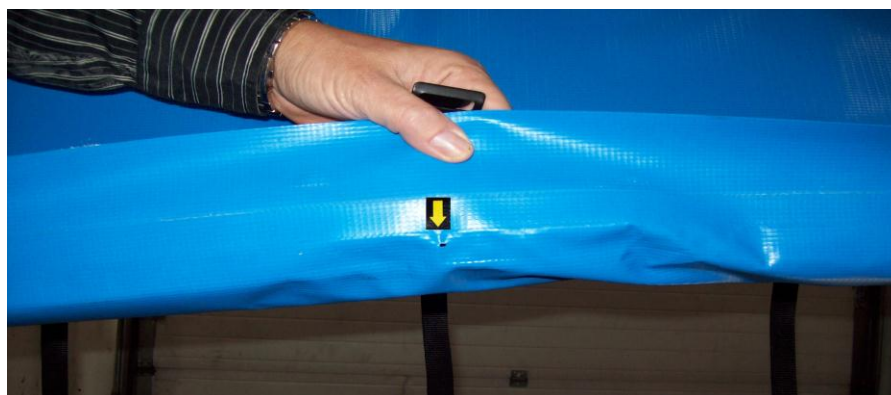




Begin by laying out the Pipe Wrap heater. Identify the cord edge of the blanket (top in this picture) and the buckle edge of the blanket (bottom edge). **Position the cord edge of the blanket along the axis of the pipe as shown below.**



Ensure that the Pipe Wrap edge is aligned with the axis of the pipe. This will help ensure that the Pipe Wrap is even when the installation is complete. Next locate the positions of the arrows on the Pipe Wrap. These arrows indicate the locations of small holes that allow air to bleed from the blanket to ensure a tight fit and superior heat transfer to the pipe.





Now you should loosely attach a few of the straps starting from the center of the Pipe Wrap. Leave the straps over the arrows undone so you can bleed the air out of the blanket.



Strap tightening can best be accomplished by sliding a hand under the strap edge of the blanket up to the cord edge making sure that the strap edge of the blanket completely overlaps the cord edge. While holding the cord edge against the pipe, tug on the flap on the strap edge to snug the wrap on the pipe. While holding the flap, slide your other hand out and snug up the strap. Repeat this procedure for each external strap. Note that the final straps to be tightened are the ones over the air bleed holes. This will ensure that all of the air has been expelled from the Pipe Wrap.



With the air expelled from inside the blanket, all of the straps can be attached. Check to be sure that the left and right ends of the blanket line up. If the cord edge of the blanket moved out of alignment with the axis of the pipe, the ends of the pipe heater will not align where they overlap.

YOU need to get the good wrap by hand before tightening the straps as **the straps will not tighten to give you a better wrap.** The strap being tightened simply prevents the pipe heater from unwrapping.

**YOU need to get the overlap and the good wrap before tightening the straps.**



The last step is to rotate the pipe heater on the pipe such that the overlapping flap on the buckle edge of the wrap points down. Buckles will be at 3 o'clock as viewed from the cord end. This is very important as the same holes that let the air out of the wrap will potentially allow water to enter the blanket.

Pointing the flap up would allow rain to run right into the blanket.

Pointing the flap down shields the air bleed holes, making it difficult for water to run up under the flap, through the holes and into the heating blanket.